

Public Auction

*Complete Liquidation of
Maple Lawn Turkey Farm*

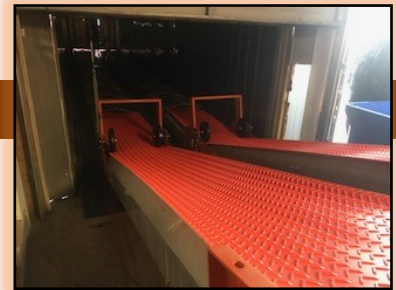
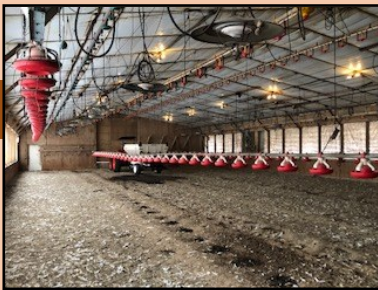
*11788 Rt 216 (Scaggsville Road)
Fulton, MD 20759*



Saturday, February 23, 2019 9:00 AM

TURKEY PROCESSING EQUIPMENT

Poss SS PDL single screw meat separator-like new; Vegmag Robot 500 Vacuum stuffer; (2) Valmetal 24"x 60' belt conveyors-just like new; 14"x20' belt conveyor; (10) 4'x4' Galv. Butchering tables; 12' conveyor table; 8' SS butchering table; 10' SS round butchering table; Hall 16"x12' SS elevator table; (2) Ashley SS Sure Pick SP38 pluckers; 8 table sucker machine, Vac pack, w/ steamer, round conveyor; sev. Vac Air shears; sev. Air scissors; Air vac vacuum; elec. Gizzard peeler; (4) Ideal stitchers; sev. Large hanging scales; (5) large chest freezers; Sev. Air curtains; extendable roller table; Sev. Assorted Turkey processing cones; (2) 40' & 80' C overhead channel w/ shackles; 300 gal. SS commercial hot water heater; Tankless hot water heater; 16, 20 & 55 lb. Scales; Plus other digital scales;



(2) Vogt Tube-Ice commercial ice machines (produces 5 ton in 24hrs);
26'x52' walk in Cooler, Russell double 4 compressors, 10' high, 4' panels 2-8' automatic doors-very nice

Keepright 3 compressor/4 fans Cooler-Freezer, like new (just compressors & doors, no panels)



EQUIPMENT

Kubota M5660SU open station tractor, 4x4 like new; NH LS140 skid steer, 1 owner-only 3600 hrs.; Nissan LP 4000 lb. Forklift, triple mast, side shift; Lanco 255 S/A lime/litter spreader-same as new; Dyna Gen ES52 diesel generator on T/A trailer, 2100 hrs.; Harley MX7 skid steer mount power rake, power angle-like new; Quick tach Bradco PD4800 post pounder-like new; Quik tach post hole digger; Grain-O-Vator, feeder wagon, w/ auger 2 compartments-same as new; Older Grain-O-Vator feeder wagon; Quik tach 9' snow pusher; Quik tach post hole digger; 6' Quik tach bucket; Hydro Tek hot water pressure washer-like new; Crown elec. 3000 lb. Pallet jack; (2) Crown walk behind pallet forks; (3) -1000 gal fuel tanks w/ elec pumps; 500 gal fuel tank, w/ elec pump; (3) 100 gal. Pickup fuel tanks, w/ 12v pumps; 300 gal. SS tank; 2- 80 gal. Vert. Air compressors; I.R. 80 gal vert. Air compressor; Alum. Dock plate; Alum cattle box off Ford 250-350; Older Indy Trail snowmobile; assorted farm gates; 750 gal. Poly tank; **BCS 732GX13 Walk behind rototiller-like new; Husqvarna 8 hp. Rototiller; Stihl HS 80 gas hedge trimmers & chainsaw head; Stihl 029 chain saw; Stihl H545 gas hedge trimmers; Echo ES255 leaf blower; Quiet Vac 8 hp. Leaf vac; 2.5 ton floor jack; (20) brand new motors from 1/4 hp up to 10 hp.; Plus large variety of assorted shop tools.**

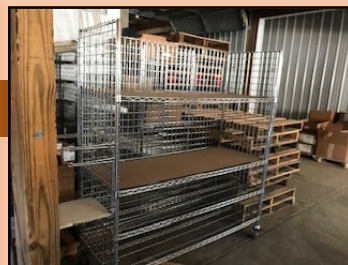
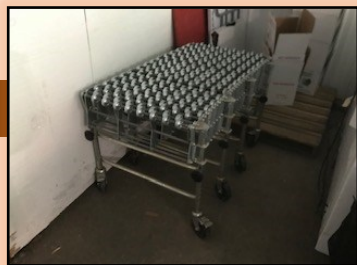
4'x6' metal heavy duty 2 story elevator;

(60) Saeplast 4'x4' heavy duty plastic totes; (50) SS & galv. 3'x 5' carts

26 sections of racking; (7) SS 4 tier racks, on wheels;

Pulse 4' Refrigeration showcase; 4 camera surveillance system;

2500' of wire calf panels(10'- 16' sections)







FEEDING & WATERING EQUIPMENT

Zeist 20 ton feed bin-like new; 20 ton Farmer Boy feed bin w/ unloading auger; (2) Farmer Boy 12 ton feed bins w/ flex augers; Farmer Boy 12 & 15 ton feed bins; Farmer Boy 8 ton feed bin w/ flex auger; Chore Time 12 ton feed bin; over 1900' of nipple waterers; 700' bell waterers; 160' nipple waterers for peeps; 1400' of Chore-Time auto turkey feeders; 360' Beacon auto turkey feeders; 300' of Cumberland & Valco auto feeders; (sold per barn in 100'-150' sections); Lots of new waterers and feeders

and parts; Mueller 2000 gal. Bulk tank, w/ 2 compressors. Several propane tanks from (6) from 100-250 gal.; (2) 500 gal.; (3) 1000 gal;

(30) round turkey or hog feeders; (7) 48" box fans; Sev. L.B. White propane heaters; (2) LP propane hanging heaters-new; (18) propane hanging heaters; sev. 175,000 btu torpedo heaters;

In 1839, Henry Iager purchased 108 acres in Fulton, MD (Howard County), that became the future home of
"Maple Lawn Turkey Farm"

Almost 100 years later in 1938, descendants Ellsworth & Elizabeth Iager began the turkey business that has provided fresh turkeys to the community for the last 80 years.

Maple Lawn was known for their free-range, oven ready, "Sho-Nuf" turkeys

There is online bidding thru Proxibid

For pictures & a complete listing go to www.proxibid.com the week of the Auction



Terms: Cash or good check. Nothing removed until settled for. 10% buyer's premium applied to all purchases.

Owners:

MAPLE LAWN TURKEY FARM
1 1788 RT 216, FULTON, MD 20759

Conducted by:



Auction Co., Inc.

1515 Kepner Hill Road • Muncy, PA 17756

(570) 546-6907

