

PUBLIC AUCTION

WEAVER'S SALVAGE & EXCAVATING

LIQUIDATION OF EXCESS INVENTORY

525 Poplar Street, Williamsport, PA

Saturday, October 26, 2019

Starting 9:00 AM-SHARP



TRUCKS

2007 STERLING S/A ROAD TRUCK, MERCEDES DIESEL, 10 SPD., 400,000 MILES; 2005 FREIGHTLINER ROAD TRUCK, 12L DETROIT, 10 SPD.; 2001 FREIGHTLINER FL112 ROAD TRUCK, 3126 CAT., 7 SPD.; **2002 STERLING S/A DUMP TRUCK, CAT DIESEL, 6 SPD AUTO, 10' ALUM DUMP, 8' SALT SPREADER & PLOW, 39,000GVW-ONLY 59,000 MILES!!!**; 2001 FORD 150XLT TRUCK, 4X4, V8-MOTOR ISSUES; 2000 FORD 150 TRUCK, 4X4 V8; 1999 DODGE 1500 RAM TRUCK, 360 GAS, 4X4; 1992 FORD FULL SIZE BRONCO, 4X4; 1989 FORD SERVICE VAN-PARTS; 1987 FORD 350 T-TAG DIESEL DUMP TRUCK; 1987 CHEVY C70 TRUCK, 14' FLATBED W/ GOOSENECK HITCH, GAS; 1986 RAM D50 TRUCK; 1959 MACK B61 ROAD TRUCK; 1955 MILITARY TOW TRUCK, 237 MACK, 5 SPD.; (2) 2 1/2 TON ARMY 6X6 TRUCKS; TOYOTA RAV 4 SUV.

TRAILERS

2017 APPALACHIAN 36' GOOSENECK CAR HAULER TRAILER; 1995 UTILITY 48' DROP DECK TRAILER, SPREAD AXLE; 1994 DYNAWELD 25 TON LOW BOY TRAILER; 32'T/A DUAL GOOSENECK FLATBED TRAILER, 27' DECK 5' DOVETAIL-3 RAMPS; SCOTTY 24' T/A BUMPER PULL CAMPER; (7) 40-45 STORAGE VAN TRAILERS; (3) PUP STORAGE VAN TRAILERS.

CLASSIC CARS

1958 EDELL 4 DOOR CAR-W/ TITLE; 1958 EDELL 2 DOOR CONVERTIBLE CAR, W/ TITLE; 1958 EDELL 2 DOOR CAR, W/ TITLE; 1958 EDELL 4 DOOR CAR-NO TITLE; (2) 1959 EDELL 4 DOOR CARS, W/ TITLE; 1960 EDELL 4 DOOR CAR, W/ TITLE; (EDELL ARE MOSTLY CORSAIR & RANGER MODELS); 1955 FORD 4 DOOR CAR-PARTS; 1960 BISCAYNE 4 DOOR CAR, -NO TITLE; 1967 FURY CONVERTIBLE CAR, W/ TITLE, RUNS AND DRIVES; 1969 DODGE DART CAR, W/ TITLE; 1965 CADILLAC CAR-PARTS-NO TITLE; 1970 CADILLAC CAR-PARTS-NO TITLE; 1970 MERCEDES 4 DOOR CAR; 1972 VOLKSWAGON CAR W/ TITLE; 1972 SAAB 4 DOOR CAR, W/ TITLE; 1976 CHEVY CAPRICE CAR, W/ TITLE-RUNS AND DRIVES; 1980 AMC CAR W/ TITLE.



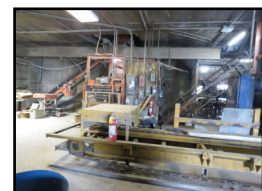
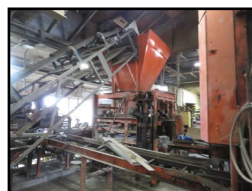
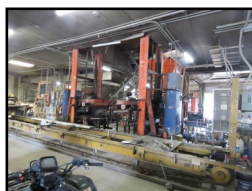
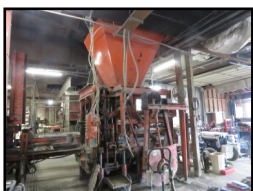
LOT OF PICTURES AND MORE INFO ON PROXIBID.COM --- WEEK OF THE AUCTION

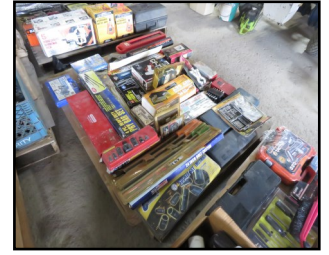
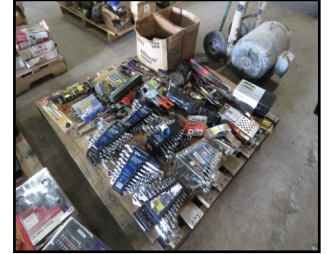
"SPECIAL MENTION"

SELLING AT 12:00 NOON

STERNS SERIES II COMPLETE BLOCK PLANT-SELLS COMPLETE (ALL AUTOMATIC)

BESSER LOADER & UNLOADER, DIGITAL SCALES, MIXER, SILO, MOISTURE PROBE, 65 RACKS WAS RUNNING DAILY UP TO 2018!!!





EQUIPMENT

DYNAPAC CC21 TANDEM DRUM ROLLER; CAT 977 CRAWLER/LOADER, 4 & 1 BUCKET; 8000 LB ARMY FORKLIFT, GAS; SATOH BEAVER DIESEL COMPACT TRACTOR, 4X4 W/ 4' 3PTH MOWER; HONDA FOREMAN 4X4 4 WHEELER, W/ PLOW-NO TITLE; **KOHLER 20KW GENERATOR ON TRAILER, W/ 3 CYC JD DIESEL-WORKS; (2) GENERAC 16KW GENERATORS ON TRAILERS, MITSUBISHI DIESELS;** STOW 20 CEMENT MIXER; TOLEDO 5000 LB PLATFORM SCALES; NEW -TITAN PORTABLE AIR COMPRESSOR; BOILER TYPE WOOD STOVE; NEW 7' FORK EXTENSIONS;

SUPPORT EQUIPMENT & TOOLS

HOBART HANDLER 140 MIG WELDER; PORTABLE DIESEL TRANSFER PUMP; TQ DG6LE DIESEL GENERATOR; (2) 8'X10' WOODEN SHEDS; SEV. DUMPSTERS; (4) SETS OF CUTTING TORCHES W/ TANKS; SEV. NEW CUTTING TORCHES; LASER LEVEL; SEV. NEW PORTA POWERS; NEW-3 1/2 TON FLOOR JACK; TOLEDO MEAT SAW; (4) PORTA TOILETS; STEEL WELDING TABLE W/ VISE; ALUM. DITCH BOXES; SEV. SETS OF STEEL STEPS; PRIDE MOBILITY CART; BOSTICH ELEC JACK HAMMER; GREENLEE PIPE BENDER UP TO 4";

PLUS LARGE ASSORMENT OF NEW & USED WRENCHES SOCKETS, ALL TYPES OF TOOLS!!!!!!
LOTS SELECTION OF SS PLATE STEEL, I-BEAMS UP TO 40', 6" C CHANNEL UP TO 17'; 100' PLUS OF NEW WELDING LEADS; TOW CHAINS-ASSORTED LENGTH;

Terms: Cash or good Pa check day of sale . Nothing removed until settled for. Out of state buyers must have current letter of credit guaranteeing funds.

Owner:

Weavers Salvage & Excavating
570-974-3805



1515 Kepner Hill Rd.
Muncy, PA 17756
570-546-6907 | fraleyauction.com

