



PUBLIC AUCTION



~ 14th ANNUAL NEW YEARS SALE ~

Hoover Tractor Inventory Reduction & Consignment Dispersal

Located on premises along Rt. 45 just west of Mifflinburg, PA (Union County) 10 miles W of Rt. 15

Wednesday, January 1, 2020

Starting 8:00 A.M.

LAST YEAR OVER 1200 PIECES!!!!

This is only a partial early listing ~ Many items coming in daily



TRACTORS: John Deere: 7200; 4250; 4240; 4520 FWD; 2950; 2550; 2350; 2140; B; 830 D ind; 770; 950 FWD; 60A FWD w/ loader; Case/IH: 95U-3000 hrs; 1140; 584; 884; H; Ford /NH: 354C w/ loader; TC24DA; 35 boomer; 9N; TS100; 50 Workmaster; Kubota: MX5200 FWD w/ loader; Kioti: DK65 FWD,cab, loader; RX7220 FWD -only 1200 hrs; White: 2-85; MF: 285; 265,1010; 431 35; MM6706 Mahindra 4010; Mitsubishi 160D,



SKID LOADERS: Bobcat 753; NH LS170, LS180, LS190; Case TR270; Doosan 460; Cat 262B; 226B; Ford 340; MT55

TRUCKS-TRAILERS: 87 Merritt hopper btm ; 13 Sure Trac tilt deck; Appalachian gooseneck; 94 Sundowner combo horse trailer; 13 Stealth 26' enclosed; 12 Sure Trac 7x12 dump; Corn Pro cattle ; 88 GN 16' cattle ; 2018 Big Tex 14GN trailer; Enclosed snowmobile; 71 Ford dump truck; 95 Chevy service truck-nice; Ford 250 PU; 94 Jeep wrangler; Sterling utility;



CONSTRUCTION: Cat YH83 telehandler; JCB505-22 telehandler; IH TD6 crawler; Kubota V45 mini excavator; 20' shipping container; light tower; Fargo 3 wheel utility truck; arrow board; directional light;

GENERAL FARM MACHINERY

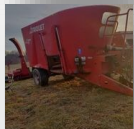
Tillage: Many plows, discs; harrows, chisel plows; etc. 12' disc; 12' cultipacker; harrows; chisel plows; JD 2600 plow; other 2-3-4 -5-6 btm plows; Landoll 6 shank ripper; Sunflower 13' disc;



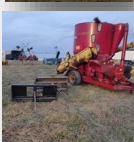
Haying: NH 1431 discbine; JD 936 discbine; NI 5212 5312 discbine; JD 11 mower; 16' wagon; Super Crimp crimper; Hesston PT10 1120 haybine; NH 489 haybine; Round balers: JD 335; 435; 854; NH 630; Hesston 530, 5530; Wegler RP200; square balers; NH 565, 268, 283, 271 276baler; JD 336; Case/IH WRX301 12 wheel rake; Stirex 10 wheel v rake; Pottinger round rake; Samasz 4201 bale wrapper; Farmland 3 pth bale wrapper; NH B37P wrapper; NH 900 chopper; NH & Gehl 980 SU wagon; NH 1030 stacker wagon; many more forage wagons, choppers, balers, discbines, ec.



Planting: JD 70004x planter; White 5100 8x30; Great Plains 1006 no till drill; IH 510, 5100 drill; JD 450 drill; JD 2x planter; Marliss no till drill; many other corn planters 2-4-6-8 rows; several sprayers; Triolet TMR mixer; JD 1600 wing mower; Wilmar 500 fert spreader; feed bins; NH 357, 358 grinder mixer; EZ Trail 3400 bin wagon; J&M 275; Lots more bin wagons; 20', 40' grain auger; B H 2610 rotary mower; Headlocks; 50 ton hyd press; cattle squeeze chute;



Lawn & Garden: Kubota BX1800 FWD, w/ deck; Kawaski Mule 550 UTV; AC 700 Sabercat & F7 snowmobiles; zero turns: Scag 52"; JD 717A; Kubota Z21; Grasshopper-new engine; Troy bilt tiller; snow blowers; snow plows; Club Car golf cart; riding mowers-JD, Cub Cadets, Craftsman, etc. 8x8 & 8x12 sheds;



Load of new items: 8', 10', 12', 14' snow pushers; skid steer mtd 2 yard trash hoppers; 7 yd jobsite box; 84" fork extensions; 78 & 90" QT buckets; root rakes; HD welding shop tables; plus more.

LOTS MORE COMING IN DAILY - LAST YEAR OVER 1100 LOTS !!!

Visit proxibid/fraleyauction for pictures week of auction

Terms: Cash or good check day of Auction.

Starting 8:00 am on smaller items, followed by compacts, then machinery in the field, 2 trucks selling all day.

Last year over 1200 lots - plan to spend the day at Hoovers

Auctioneer Note: This will be a large volume sale, limited small items, be on time. Accepting equipment up until Dec. 30th @ 1 PM. Questions & consignments please call Hoover Tractor Inc. at (570) 966-3821 ask for Jerry or Allen Jr.



1515 Kepner Hill Rd. AY001971
Muncy, PA 17756
570-546-6907 | fraleyauction.com

NOTHING ACCEPTED ON TUESDAY DEC 31

Breakfast & lunch available - porta johns - come prepared for the weather