

PUBLIC AUCTION

Paul L Kitchen Estate

905 Whitmoyer Road, Watsonstown, PA



*Saturday, **March 15**, 2025 9:00 AM*

96 Acre Northumberland County Farm

**Antiques, Collector's Items {Steam Whistle Collection}
Guns, War Memorabilia, Household Items, Equipment**



1515 Kepner Hill Rd.
Muncy, PA 17756
570-546-6907 | fraleyauction.com

96 ACRE NORTHUMBERLAND CO FARM at 1:00 PM

Sells to the highest bidder

THIS PROPERTY HAS NOT BEEN ON THE MARKET FOR OVER 65 YEARS

Once in a lifetime opportunity – Beautiful Setting

Property's tax parcel #026-00-014-004. of Lewis township, Northumberland Co. Farm consists of over 96 acres of rolling farmland in a picturesque private setting, **82 acres** of highly productive cropland (approx. 10 acres currently fenced with beautiful board fence). Balance of acreage is wood lot & home site. Over 1/2 mile paved road frontage along twp road. 2 story solid brick historic 10 room, 4 bedroom 1 bath farm house. (approx. 2016 sq ft,) (home has some structural & water damage). Updated 200 amp elec service, oil furnace with hot water baseboard heat & backup LP wall unit heaters. Conventional septic system & onsite well. Plus 2 car attached garage w/ workshop area. Asphalt driveway & parking area. Large L shaped bank barn (30x80 & 30x40) with loafing shed, concrete stave silo, equipment storage (shed/corn crib) & an old hog pen.

RE TERMS: \$100,000 down day of sale in guaranteed funds, balance in 60 days. 6% buyers premium, to be applied to purchase price. RE transfer taxes divided equally between buyers & seller. Other Terms made known day of sale.

To view contact: Dave Williams- Associate Broker. Keller Williams Advantage Realty. 570-971-0371 Cell / 570-326-3333 office.



Guns & War Memorabilia

8MM Military Mauser w/ custom stock & reblued w/ scope; Rem. 722 222 w/ bushnell 6x24; Weatherby mark V 300 mag. w/ bushnell 8x32; Win. 1897 12ga. Pump; Win. 64 32 special, lever action; Win. 74 22short; Win. 94AE colt 45; Marlin 922N 22 w/ 3x9; Marlin 81DL 22; Ruger 96 22 level action; Ruger 10/22 22 w/ 6 point scope; LC Smith 12 ga double barrel; Springfield 13 single shot 22; Glenfield 60 22 long; Shiloh 1874 45 caliber; Stevens 940 410 single shot; Rem. 11-48 28 ga.; Sauer 202 30-06; DPMS A-15223; Romanian 7.62x39 Russian/Saiga 12 ga.; WW kaye double barrel cap & ball; **Whitmore Nathaniel 22 pistol-rare**; **Iver Johnson 32 top break, 3rd model automatic, hammerless pistol-rare**; Taurus 38 special; Taurus 45, pearl grips; S&W 38; Young American 22 rimfire; (2) National Arms 32 auto; (3) Johnson Arms 32; Bauer 25 auto; Plus sev more assorted pistols & guns; Plus sev weaver & bushnell scopes; Bayonet; Sword; very old canteen; powder horn & patches; bow & arrows; fishing creel & poles.



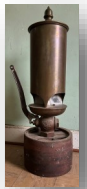
Large amount of Ammo: 30-06; 45 long colt; 45 Sharps; 12 ga.; 8mm; 300 & 460 Weatherby; 32 special; 7.62x39; 410; 38 S&W; lots of 22 rounds.

Triumph Champion (42 gun) gun safe ~ Alum shooting bench

30+ Brass Steam Whistle Collection



Crosby 11"x21"; CSG&V 8"x17"; Crane 125 3 1/2"x 11 1/2"; Lunkenheimer 4"x 8"; Pioneer 5 1/2"x6"; Powell 2"x5"; Sev. Crosby 4" chime; Plus lots more from up to 11"x 21"; Very Large collection of brass plumb bobs; Brass oilers; boiler gauges; Chelsea Clock co. US government 8"x15" clock; Early large ship compass; Early brass tire pumps & fire nozzles;



Farm Equipment

JD 4430 Tractor, CAH, power shift 520/85 R38 tires, suitcase weights, 5945 hrs. - SUPER NICE!!; JD X584 Lawn Tractor; 54" deck, all wheel steer-nice; JD X534 lawn Tractor, 54" deck, 44" snow blower, all wheel steer, weights soft cab, only 849 hrs. like new; Cub Cadet 7360 SS Tractor, 4WD, w/ 485 loader, only 417 hrs.-like new. Bush Hog squealer SQ720 3 pth rotary mower; Zimmerman 3 pth. 55 gal sprayer w/ booms; DR 3 pth. Fence line trimmer/mower; '06 Ford 150 Truck, XLT, 4wd, auto; '77 Cadillac Car, 2 door auto; Westinghouse 9500 watt generator; Power pack 5000 watt generator; Miller thunderbolt XL 300 amp welder; (2) Stihl weed wackers; Stihl 028AV chain saw; Plus lots of misc tools .

McCormick 10 hp. Hit & miss engine, W7914; Stover type K 2 hp. Hit & miss engine.



Old Collector's Items

Early CI Jockey lawn ornament; (2) Early horse head hitching posts; CI hitching post; Sears Roebuck & Co 7' measure stick; Screwless brass 7' straight edge; RHM brass measure wooden square; small brass table scale; Chatillon-NY 15 lb hanging scale; odd buck saw.

Horse Bells: Several old dinner bells 3 bell horse saddle hame carriage chime bells; 3 bell horse sleigh harness collar tower bells; (2) 3 sets larges bells; several straps back bells; small bells;

Milk Bottles: (2) Chamberlains Dairy 1 qt & 1 pt; Glen Lock Farms, Sunbury, 1 qt; East Malta Farms Golden Guernsey 1 qt; E W Milheim & Sons 1 qt; The Shuman Dairy, McEwensville 1 qt; Wisner's Dairy Thermometer, McEwensville; Brown cow creamer w/bell; Coverdale soft drink thermometer sign; Tobacco tins; 3 Demijohn woven wicker bottles.

Lanterns, Levels & Lights: Fee & Stemedel 16 power spy glass in wooden box; Rushmore elec search light (Dynamo Works, NJ); American Hot Dip glass lantern; Perkins #8 elec. glass globe lantern; Dietz Night Watch lantern, Syracuse; brass lantern w/wooden handle; Brass beveled glass lantern; 2 matching glass globe lanterns; Red & Green glass lanterns; Buggy lanterns; Ship compass in wooden box; The American Combined Level & Grade finder, (Edward Helb R, NY); Stanley 37-24: level; other Stanley level; block planes.

Army toy truck; Artillery toy cannon; Marx elec game on stand.

Antiques ~ Furniture

Solid end Dry Sink w/2 drawers; Spool leg 1 drawer wash stand; Oak wash stand; Large & small dropleaf tables; Marble top stand; Wooden baby cradle; George A Clark 4 drawer spool cabinet; Tom Mix & Tony wooden rocking horse; National & Busy Bee wash boards; Atwater Kent table top radio; Oak Stands; 3 drop leaf tables; Waterbury Clock Co shelf clock; Lions Head shelf clock; Brooklyn pitcher & wash bowl set; Wicker fernery; Old cupboards & chests; wall match holder; Diamond Match Co match holder; brass trim scribes & measurers; old box cameras; Wooden bird cage; Brown Crock pitcher; 6 gal brown top crock; Brown & White crock jugs; old cash register; Rolling pins, Butcher knives; McCoy pitcher; Org. meat cutting board, (McEwensville Store) ice cream scoops; Arrowheads; Jewelry; Flasks; Fishing poles & bow & arrows; old pictures; CI shelf brackets; 6 large CI saw blades; CI butcher kettle; Apple butter kettle; 2 ox yokes; milk can; wooden fork; Coco Cola cooler; Jewelry, Etc. Etc.

Stella guitar; small Supertone Ukulele; M-Hohner (Germany) harmonica; USA Trumpet, Other music instruments.

Household Items

Amana refrigerator, freezer on top, like new; Amana washer; Whirlpool dryer; old elec stove; 5 drawer dresser; Uph rocking chair; Bedroom set w/like new full size mattress; Uph couch & chair; Mag. round table; odd dining chairs; pyrex dishes; Blue & White dishes; silverware; pots & pans.

Sale Order:

Starting at 9:00 AM ~ Steam Whistles at 11:00 AM ~ Guns & Ammo at 12:00 Noon

Real Estate 1:00 PM ~ Farm Equipment 1:30 PM

Terms:

Cash or good check
day of sale.
Nothing removed until
settled for.

Auctioneer Note:

Many beautiful &
hard to find
Collectables



1515 Kepner Hill Rd.

Muncy, PA 17756

570-546-6907 | fraleyauction.com

Online bidding



Fraley Live